



SMART CHALLENGERS

SMART CHALLENGERS QUESTIONS – OCTOBER 2020

1. IF

$$\begin{aligned} \text{Cone} \times \text{Cone} \times \text{Cone} &= 27 \\ \text{Cone} + \text{Cone} &= 10 \\ \text{Cone} + \text{Cone} &= 11 \end{aligned}$$

Find

$$\text{Cone} + \text{Cone} + \text{Cone}$$

- A. 36
- B. 45
- C. 15
- D. 20

Ans

2. A clock seen through a mirror, shows quarter past three. What is the correct time shown by the clock?

- A. 3.15
- B. 8.45
- C. 9.15
- D. 9.45

Ans

3. A river flows west to east and on the way turns left and go in a semi-circle round a hillock, and then turns left at right-angles. In what direction is the river finally flowing?

- A. NORTH
- B. EAST
- C. WEST
- D. SOUTH

Ans

4. Of what number the $\frac{2}{5}$ of $\frac{5}{8}$ of $\frac{4}{7} = 22$?

- A. 154
- B. 164
- C. 132
- D. 198

Ans

5. Take out the wrong number from the given series.

3, 4, 9, 33, 136, 685, 4116

- A. 33
- B. 136
- C. 685
- D. 9

The correct number in the place is.....

Ans:

6. A clock strikes once at 1 o'clock, twice at 2 o'clock, thrice at 3 o'clock and so on. How many times will it strike in 24 hours?

- A. 78
- B. 136
- C. 156
- D. 196

Ans:

7. The simplest form of 1.5: 2.5 is

- A. 6:10
- B. 0.75: 1.25
- C. 3:5
- D. 0.3: 0.5

Ans:

8. Three bells toll at the intervals of 10, 15 and 24 minutes. All the three begin to toll together at 8 A.M. At what time they will again toll together?

- A. 10 AM
- B. 8.45 AM
- C. 9.15 AM
- D. 10.15 AM

Ans:

9. Which register holds the address of the next instruction to be fetched from memory?

- A. Program counter
- B. Memory address register (MAR)
- C. Current instruction register (CIR)

Ans:

10. An example of a species that was introduced to Australia with harmful results is the?

- A. Cactoblastis moths
- B. Cane toad
- C. Potato

Ans:

11. A cup of coffee at 80°C is left to cool to 30°C . If the heat capacity of the cup and coffee is 2.0KJK^{-1} , how much heat is released during the cooling?

- A. 0.04KJ
- B. 60KJ
- C. 100KJ
- D. 160KJ

Ans:

12. Pure H₂O boils at 100 °C and freezes at 0 °C. What is the melting point and boiling point of water after the addition of potassium chloride?

	Boiling point / °C	Freezing point / °C
A	103	-3
B	103	3
C	97	-3
D	97	No change

Ans:

13. Which is the best definition of meretricious?

- A. tawdrily and falsely attractive
- B. of falsified origin
- C. filled with delight and wonder
- D. valuable and satisfying

Ans:

14. This word is originated from the Arabic word “al zahr” meaning dice. The word is?

- A. hash
- B. hazard
- C. adze
- D. azon

Ans

15. Read the following sentence and select the option with correct punctuation.

1. Coach Espinoza who took her team to the Final Four last year might take a job with Notre Dame?

- A. Espinoza who took her team to the Final Four last year, might
- B. Espinoza, who took her team to the Final Four last year might
- C. Espinoza, who took her team to the Final Four last year, might
- D. no punctuation needed

Ans

16. Select a suitable preposition from the list.

His path was beset _____ difficulties?

- A. with
- B. within
- C. among
- D. by

Ans

17. In the following questions, find the correctly spelt word.

- A. Gaurantee
- B. Garuntee
- C. Guarantee
- D. Guaruntee

Ans

18. What does the phrase *stew in his own juice* mean in the following sentence?

Since he knew what would happen, he should be left to *stew in his own juice*.

- A. Make a stew
- B. Boil
- C. Suffer for his own act
- D. Suffer in his own juice

Ans:

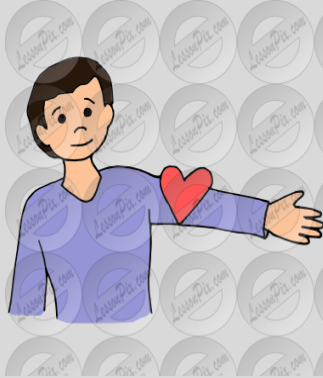
19. Look at the pictures given below. Each picture is an illustration of an idiom. Which picture matches with meaning given below:

Having a very high opinion of oneself, filled with or showing excessive self-esteem.

a.



b.



c.



Ans:

20. Countries across the world have reduced the interest rate to counter the 'economic shock' resulting from the corona virus outbreak and consequent lockdown. In UK, interest rate has been cut to an all-time low from 0.75% to 0.1%. What happens when interest rate is low?

Choose the correct answer:

- A) When interest is low, unemployment starts to increase
- B) Consumers and producers will be encouraged to take loans; increase spending and stimulate demand in the economy
- C) Disposable income will fall

Ans:

21. Which information is not contained in a partnership deed for a general partnership?

- A. The conditions under which new partners may be introduced.
- B. The method of sharing profits and losses.
- C. The responsibilities of each partner in the business.
- D. The statement that the liability of the partners is limited.

Ans: